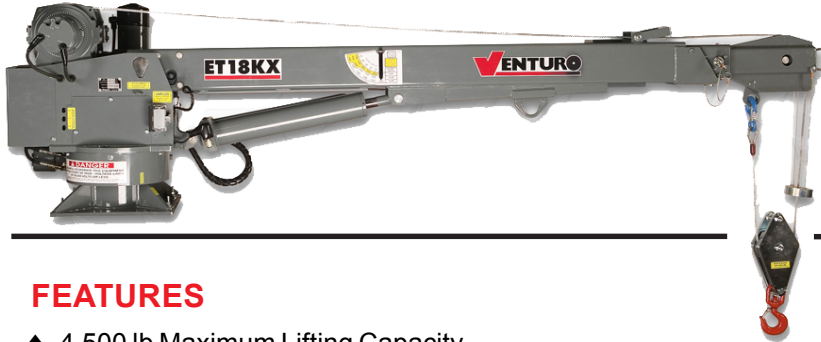




# ET18KX



## ELECTRIC-HYDRAULIC 18,000 FT-LB CRANE

### FEATURES

- ◆ 4,500 lb Maximum Lifting Capacity
- ◆ 18,000 ft-lb Moment Rating
- ◆ Electric-Hydraulic Power
- ◆ Manual or Hydraulic Boom Extension 8-12 ft
- ◆ Manual Boom Extension 12-16 ft
- ◆ Continuous Power Rotation
- ◆ Meets ANSI B30.5 Saftey Standards
- ◆ Meets OSHA 1910.180 Requirements

### STANDARD EQUIPMENT

- ◆ Capacity Overload Shut-Off System
- ◆ Anti-Two-Blocking System
- ◆ 80 ft of 5/16" Aircraft-Quality Wire Rope
- ◆ Remote Control Pendant: 25 ft Cord and Quick Disconnect
- ◆ Snatch Block with Swivel Hook Safety Latch
- ◆ Master Disconnect Switch
- ◆ Battery Cable: 25 ft

### OPTIONAL EQUIPMENT

- ◆ Radio Remote Controls
- ◆ Manual Outrigger Packages
- ◆ Mounting Pedestal for Platform Bodies
- ◆ Boom Rests

LIFTING CAPACITIES	
REACH (FT)	CAPACITY (LBS)
4	4,500
8	2,250
12	1,500
16	1,125

See Back Page for Complete Capacity Chart

### MINIMUM REQUIREMENTS

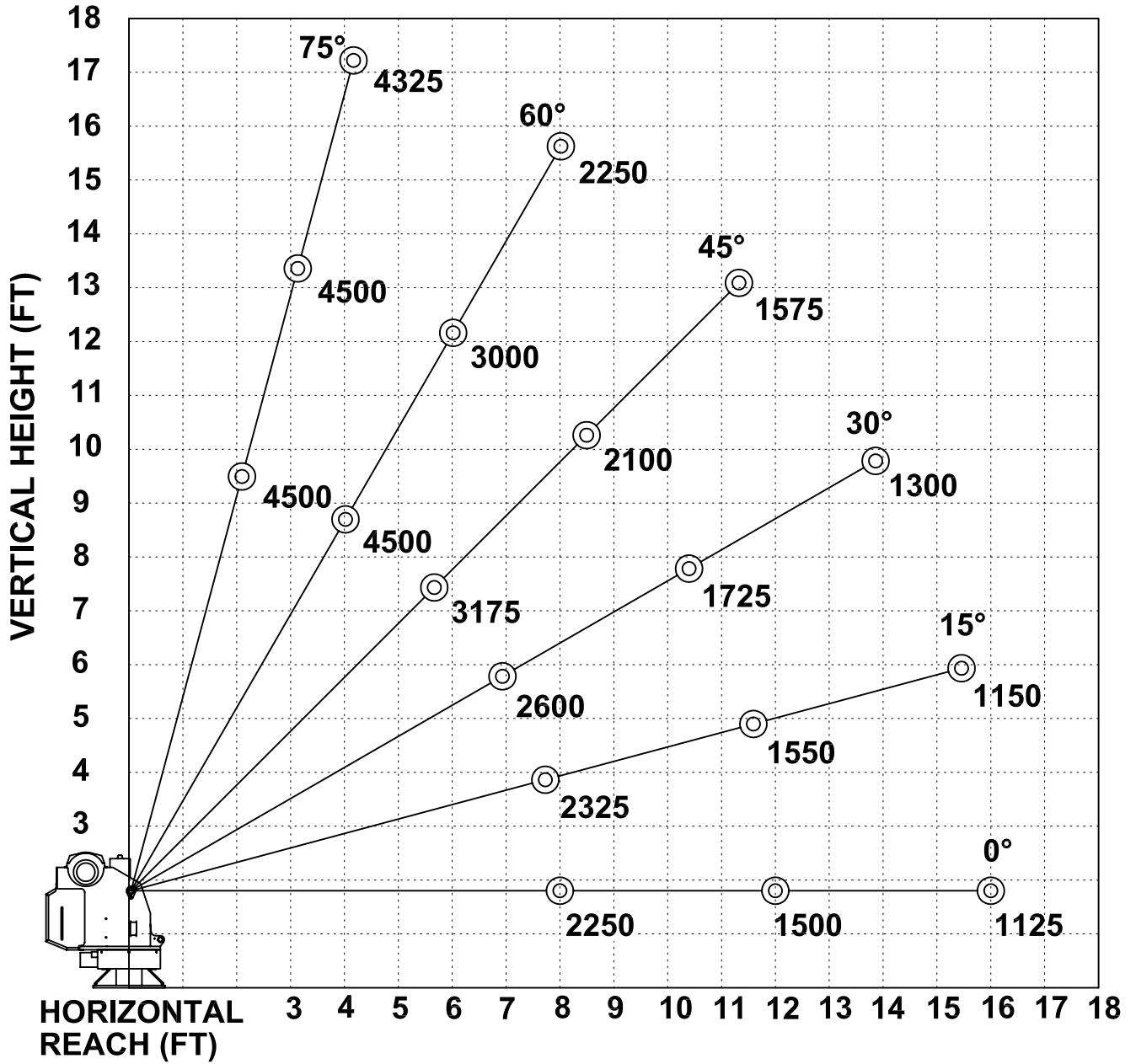
- ◆ 11,000 lb GVWR Chassis
- ◆ Outriggers
- ◆ Electrical Power Source - 12 V DC



12110 BEST PLACE  
CINCINNATI OH 45241  
8 0 0 . 2 2 6 . 2 2 3 8  
FAX 513.326.5427  
www.venturo.com

Specifications subject to change without notice.

# ET18K(X) - 8-12-16 BOOM MAXIMUM CAPACITY CHART



**MUST USE SNATCH BLOCK  
FOR LOADS OF 2250 LBS.  
AND GREATER**