



ET12KX ET12K

**ELECTRIC-HYDRAULIC
12,000 FT-LB CRANE**



FEATURES

- ◆ 3,500 lb Maximum Lifting Capacity
- ◆ 12,000 ft-lb Moment Rating
- ◆ Electric-Hydraulic Power
- ◆ Manual or Hydraulic Boom Extension 7-11 ft
- ◆ Manual Boom Extension 11-15 ft
- ◆ Continuous Power Rotation
- ◆ Meets ANSI B30.5 Safety Standards
- ◆ Meets OSHA 1910.180 Requirements

STANDARD EQUIPMENT

- ◆ Capacity Overload Shut-Off System
- ◆ Anti-Two-Blocking System
- ◆ 65 ft of 1/4" Aircraft-Quality Wire Rope
- ◆ Remote Control Pendant: 25 ft Cord and Quick Disconnect
- ◆ Snatch Block with Swivel Hook Safety Latch
- ◆ Master Disconnect Switch
- ◆ Battery Cable: 25 ft
- ◆ Cable Overhaul Weight

OPTIONAL EQUIPMENT

- ◆ Radio Remote Controls
- ◆ Manual Outrigger Packages
- ◆ Mounting Pedestal for Platform Bodies
- ◆ Boom Rests

LIFTING CAPACITIES	
REACH (FT)	CAPACITY (LBS)
4	3,500
7	1,800
11	1,100
15	800

See Back Page for Complete Capacity Chart

MINIMUM REQUIREMENTS

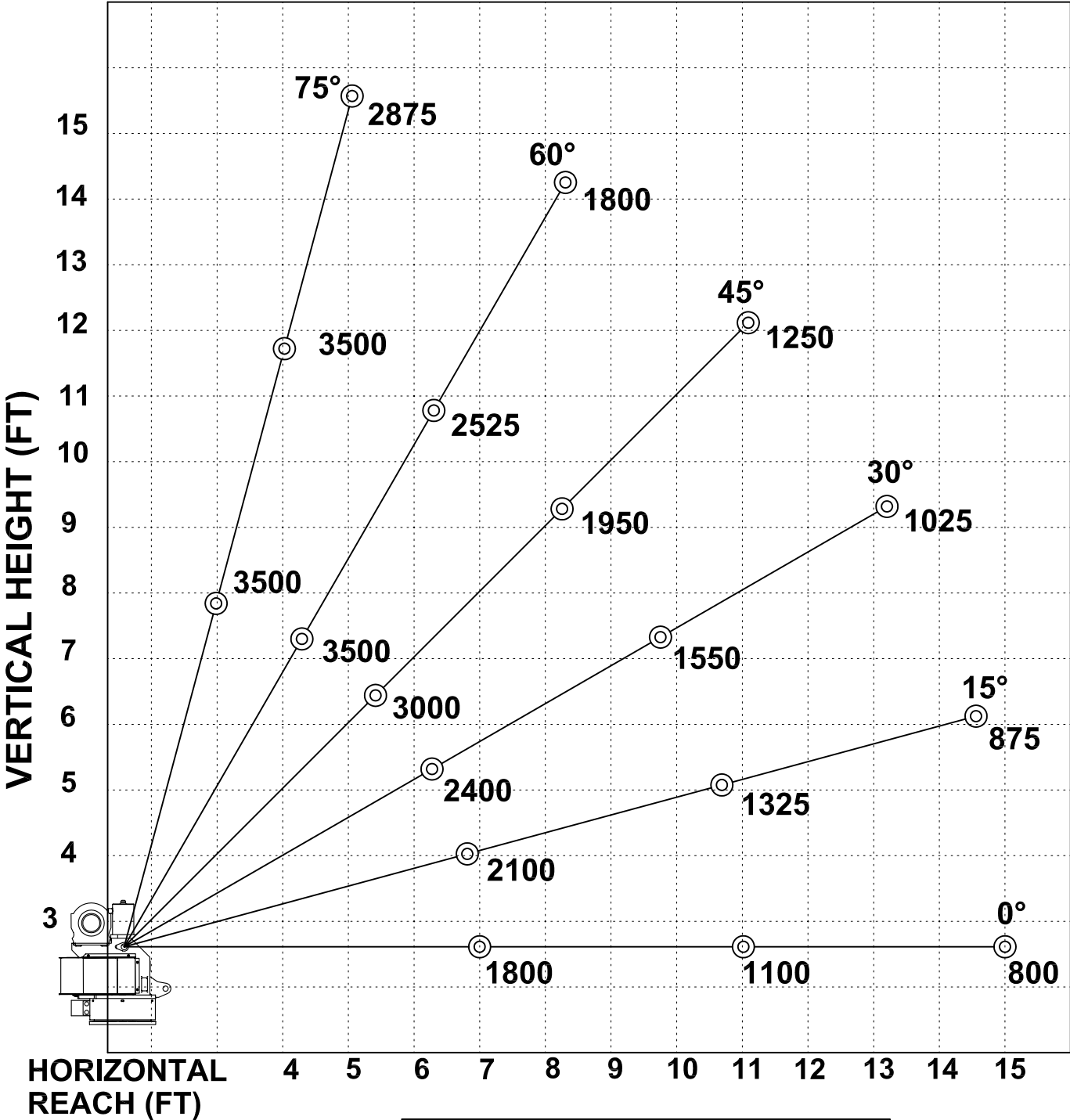
- ◆ 10,000 lb GVWR Chassis
- ◆ Outriggers
- ◆ Electrical Power Source - 12 V DC



12110 BEST PLACE
CINCINNATI OH 45241
8 0 0 . 2 2 6 . 2 2 3 8
FAX 513.326.5427
www.venturo.com

Specifications subject to change without notice.

ET12K(X) MAXIMUM CAPACITY CHART



**MUST USE SNATCH BLOCK
FOR LOADS OF 1750 LBS.
AND GREATER**