



ET36KX



**ELECTRIC-HYDRAULIC
36,000 FT-LB CRANE**

FEATURES

- ◆ 6,000 lb Maximum Lifting Capacity
- ◆ 36,000 ft-lb Moment Rating
- ◆ Electric-Hydraulic Power
- ◆ Hexagonal Boom Construction
- ◆ Fully Hydraulic Boom Extension 10-20 ft
- ◆ High-efficiency Electric Planetary Winch
- ◆ Continuous Power Rotation
- ◆ Load-Holding Counterbalance Valves on all Cylinders
- ◆ Meets ANSI B30.5 Safety Standards
- ◆ Meets OSHA 1910.180 Requirements

LIFTING CAPACITIES	
REACH (FT)	CAPACITY (LBS)
6	6,000
10	3,600
16	2,250
20	1,800

See Back Page for Complete Capacity Chart

STANDARD EQUIPMENT

- ◆ Capacity Overload Shut-Off System
- ◆ Anti-Two-Blocking System
- ◆ 80 ft of 5/16" Aircraft-Quality Wire Rope
- ◆ Remote Control Pendant: 25 ft Cord and Quick Disconnect
- ◆ Snatch Block with Swivel Hook Safety Latch
- ◆ Master Disconnect Switch
- ◆ Battery Cable: 25 ft

MINIMUM REQUIREMENTS

- ◆ 14,500 lb GVWR Chassis
- ◆ Outriggers - Rear
- ◆ Electrical Power Source - 12 V DC

OPTIONAL EQUIPMENT

- ◆ Radio Remote Controls
- ◆ Electric/Hydraulic and Manual Outrigger Packages
- ◆ Mounting Pedestal for Platform Bodies

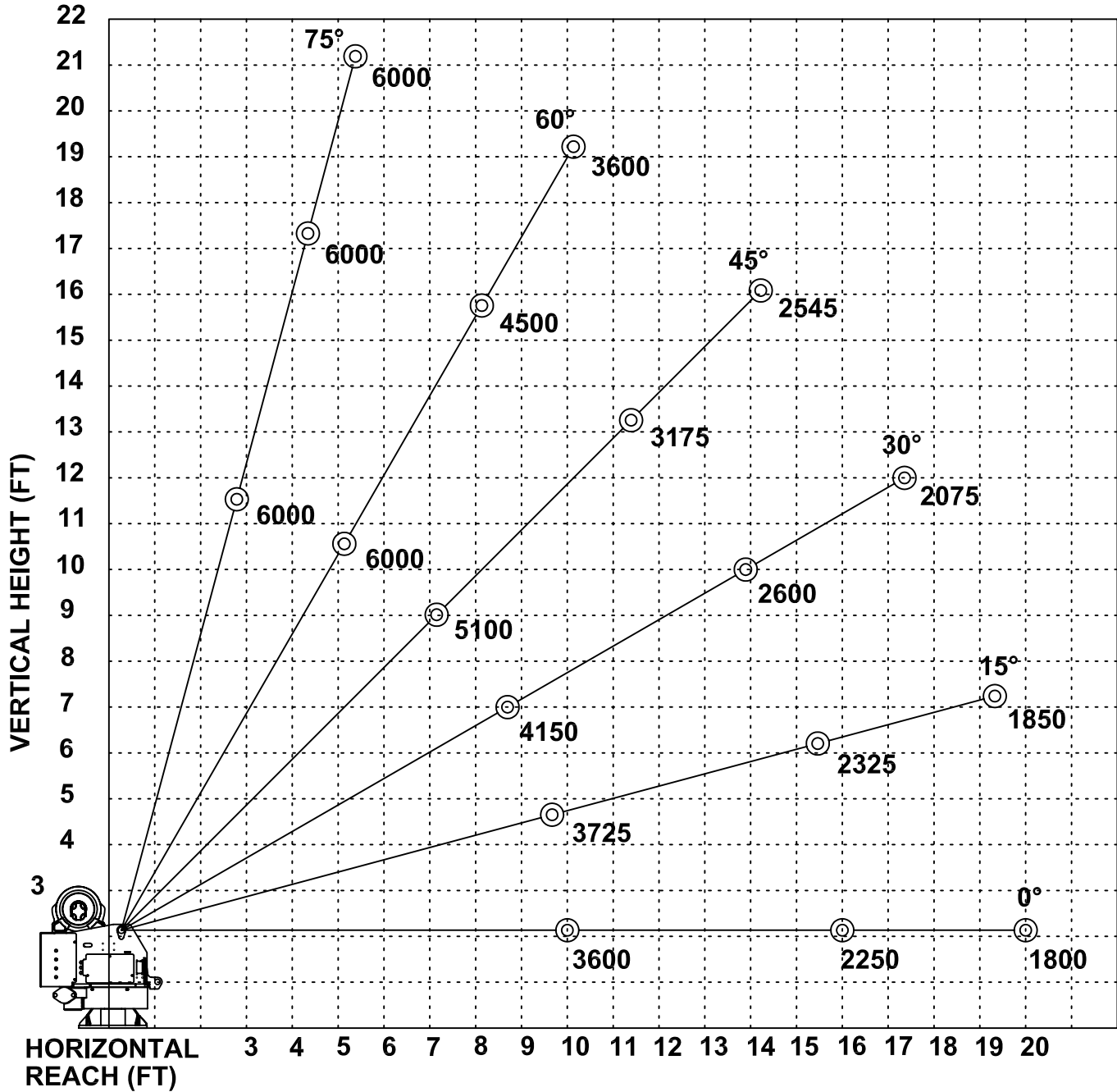
Specifications subject to change without notice.



12110 BEST PLACE
CINCINNATI OH 45241
800.226.2238
FAX 513.326.5427
www.venturo.com

DISTRIBUTED BY:

ET36K(X) - 10-16-20 BOOM MAXIMUM CAPACITY CHART



**MUST USE SNATCH BLOCK
FOR LOADS OF 3000 LBS.
AND GREATER**